

GEO. SHEARD FABRICS








Performance with Style

INSPIRATION

SPECIFICATIONS

| | |
|---------------|--|
| Style | 21878 |
| Contents | 20% REPREVE® Our Ocean™ Post Consumer Recycled Polyester 80% REPREVE® Post Consumer Recycled Polyester |
| Weight | 22 oz./lin.yd. |
| Width | 54" |
| Backing | Nvirosoft™ Eco-friendly backing |
| Finish | GreenShield® Stain Repellent |
| Cleaning Code | WS |

PERFORMANCE

| | |
|--|----------------------------------|
|  Abrasion Resistance ASTM D4157 | 250,000+ Double Rubs |
|  Pilling Resistance ASTM D3511 | Class 5 |
| Seam Slippage ASTM D4034 | Warp: 79 lbs Fill: 133 lbs |
| Breaking Force ASTM D5034-09 | Warp: 177 lbs Fill: 234 lbs |
|  Colorfastness to Light AATCC 16.3 | L4-5 Min. 40 hours |
|  Colorfastness to Crocking AATCC 8 | Class 4.5 - dry Class 5 - wet |
|  State of California Technical Bulletin 117: June 2013 | Pass |

SUSTAINABILITY

This fabric contains post-consumer recycled polyester



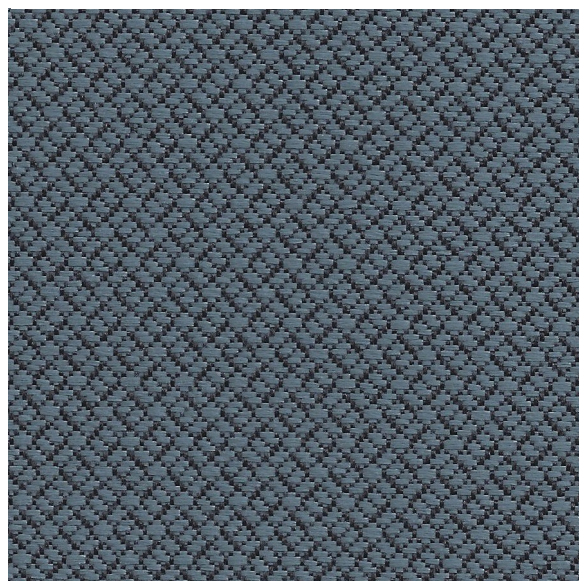
The Greenleaf logo is a trademark of Geo. Sheard Fabrics and designates fabrics containing post-consumer recycled polyester made from recycled plastic bottles which are diverted from landfills.

REPREVE® Our Ocean™ is the leading brand of recycled performance yarns and contains plastic derived from bottles collected within 50 kilometers of coastlines in countries that lack formal waste or recycling systems.

Nvirosoft™ is an environment-friendly acrylic backing which is free of all Prop 65 chemicals at the source. It combines high performance with a soft and supple finish for comfort and ease of upholstery.

GreenShield® is a stain repellent recognized for its environmental properties. It contains no PFOA and PFOS and is Prop 65 compliant. It provides excellent oil and water repellency while reducing the impact on the environment.

TM404 Airforce



COLORSPEC® TEXTURES