

GEO. SHEARD FABRICS







Performance with Style

FREQUENCY

SPECIFICATIONS

Style	60262
Contents	65% REPREVE® Post Consumer Rec. Polyester 35% Polyester
Weight	10 oz./lin.yd.
Width	54"
Backing	Nvirosoft™ Eco-friendly backing
Finish	GreenShield® Stain Repellent

PERFORMANCE

 Abrasion Resistance ASTM D4157	50,000+ Double Rubs
 Pilling Resistance ASTM D3511	Class 5
Seam Slippage ASTM D4034	Warp: 79 lbs Fill: 65 lbs
Breaking Force ASTM D5034-09	Warp: 172 lbs Fill: 253 lbs
 Colorfastness to Light AATCC 16.3	L5 Min. 40 hours
 Colorfastness to Crocking AATCC 8	Class 5 - dry Class 5 - wet
 State of California Technical Bulletin 117: June 2013	Pass
 Fabrics are resistant to bleach, peroxide and dis- infectant based cleaners	Cleanable with a 10% Bleach solution

SUSTAINABILITY

This fabric contains post-consumer recycled polyester



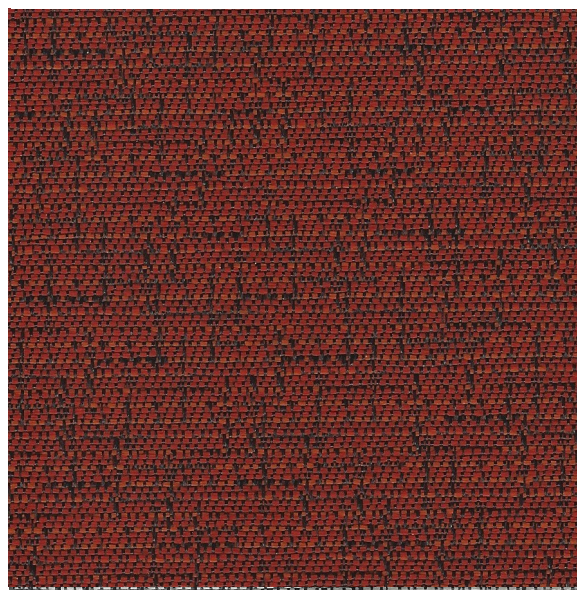
The Greenleaf logo is a trademark of Geo. Sheard Fabrics and designates fabrics containing post-consumer recycled polyester made from recycled plastic bottles which are diverted from landfills.

REPREVE® is the leading brand of recycled performance yarns and contains plastic derived from bottles.

Nvirosoft™ is an environment-friendly acrylic backing which is free of all Prop 65 chemicals at the source. It combines high performance with a soft and supple finish for comfort and ease of upholstery.

GreenShield® is a stain repellent recognized for its environmental properties. It contains no PFOA and PFOS and is Prop 65 compliant. It provides excellent oil and water repellency while reducing the impact on the environment.

FQ707 Lust



ESSENTIALS GREEN