

GEO. SHEARD FABRICS







Performance with Style

FREQUENCY

SPECIFICATIONS

| | |
|----------|---|
| Style | 60262 |
| Contents | 65% REPREVE® Post Consumer Rec. Polyester 35% Polyester |
| Weight | 10 oz./lin.yd. |
| Width | 54" |
| Backing | Nvirosoft™ Eco-friendly backing |
| Finish | GreenShield® Stain Repellent |

PERFORMANCE

| | |
|---|--|
|  Abrasion Resistance ASTM D4157 | 50,000+ Double Rubs |
|  Pilling Resistance ASTM D3511 | Class 5 |
| Seam Slippage ASTM D4034 | Warp: 79 lbs Fill: 65 lbs |
| Breaking Force ASTM D5034-09 | Warp: 172 lbs Fill: 253 lbs |
|  Colorfastness to Light AATCC 16.3 | L5 Min. 40 hours |
|  Colorfastness to Crocking AATCC 8 | Class 5 - dry Class 5 - wet |
|  State of California Technical Bulletin 117: June 2013 | Pass |
|  Fabrics are resistant to bleach, peroxide and dis- infectant based cleaners | Cleanable with a 10% Bleach solution |

SUSTAINABILITY

This fabric contains post-consumer recycled polyester



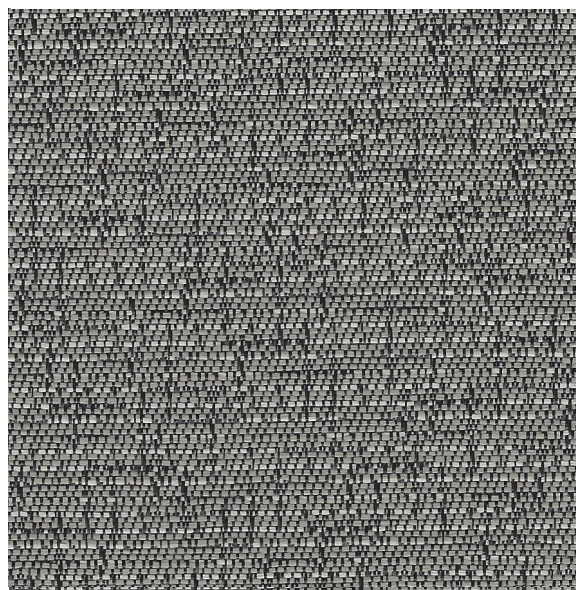
The Greenleaf logo is a trademark of Geo. Sheard Fabrics and designates fabrics containing post-consumer recycled polyester made from recycled plastic bottles which are diverted from landfills.

REPREVE® is the leading brand of recycled performance yarns and contains plastic derived from bottles.

Nvirosoft™ is an environment-friendly acrylic backing which is free of all Prop 65 chemicals at the source. It combines high performance with a soft and supple finish for comfort and ease of upholstery.

GreenShield® is a stain repellent recognized for its environmental properties. It contains no PFOA and PFOS and is Prop 65 compliant. It provides excellent oil and water repellency while reducing the impact on the environment.

FQ103 Dust



ESSENTIALS GREEN