

# GEO.SHEARD FABRICS



Performance with Style



**GENESIS**  
Open Line



# GEO. SHEARD FABRICS








## Performance with Style

## GENESIS

### SPECIFICATIONS

Style	52481
Contents	55% REPREVE® Our Ocean™ Post Consumer Recycled Polyester 45% Polyester
Weight	13 oz./lin.yd.
Width	54"
Backing	Nvirosoft™ Eco-friendly backing
Finish	GreenShield® Stain Repellent
Cleaning Code	WS

### PERFORMANCE

 Abrasion Resistance ASTM D4157	500,000+ Double Rubs
 Pilling Resistance ASTM D3511	Class 5
Seam Slippage ASTM D4034	Warp: 90 lbs Fill: 79 lbs
Breaking Force ASTM D5034-09	Warp: 304 lbs Fill: 265 lbs
 Colorfastness to Light AATCC 16.3	L4-5 Min. 40 hours
 Colorfastness to Crocking AATCC 8	Class 4.5 - dry Class 5 - wet
 State of California Technical Bulletin 117: June 2013	Pass

### SUSTAINABILITY

#### This fabric contains post-consumer recycled polyester



The Greenleaf logo is a trademark of Geo. Sheard Fabrics and designates fabrics containing post-consumer recycled polyester made from recycled plastic bottles which are diverted from landfills.

**REPREVE®** Our Ocean™ is the leading brand of recycled performance yarns and contains plastic derived from bottles collected within 50 kilometers of coastlines in countries that lack formal waste or recycling systems.

**Nvirosoft™** is an environment-friendly acrylic backing which is free of all Prop 65 chemicals at the source. It combines high performance with a soft and supple finish for comfort and ease of upholstery.

**GreenShield®** is a stain repellent recognized for its environmental properties. It contains no PFOA and PFOS and is Prop 65 compliant. It provides excellent oil and water repellency while reducing the impact on the environment.

IL308 Rubine



COLORSPEC® CLASSICS

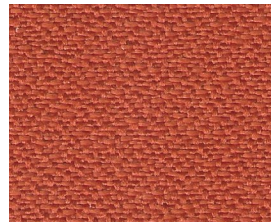


# GEO.SHEARD FABRICS

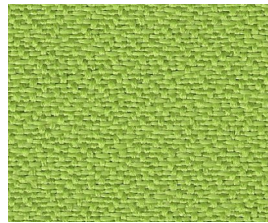


Performance with Style

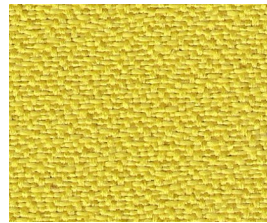
## GENESIS



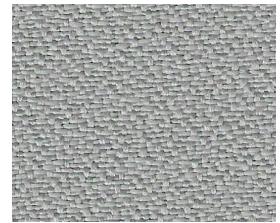
GS705 Firecracker



GS512 Elektra



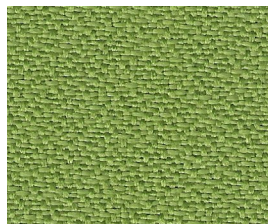
GS203 Sunlight



GS803 Cinder



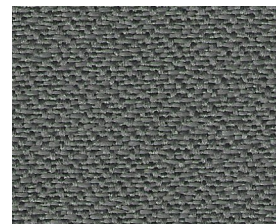
GS306 Lipstick



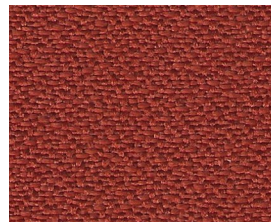
GS502 Jade



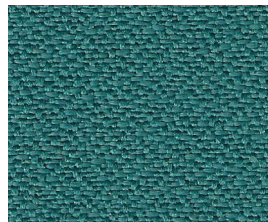
GS101 Poplar



GS802 Moonwalk



GS310 Cayenne



GS511 Aqua



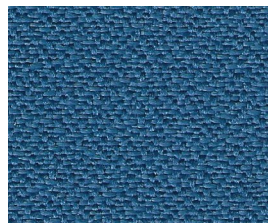
GS102 Flax



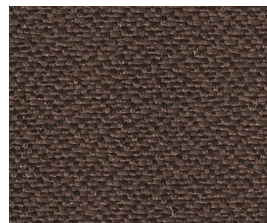
GS814 Carbon



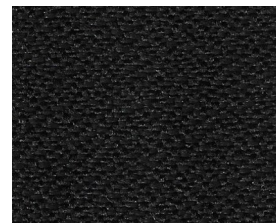
GS709 Port



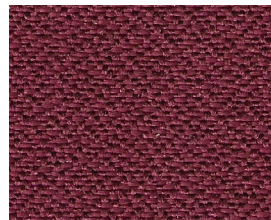
GS404 Atmosphere



GS704 Java



GS903 Flint



GS304 Chianti



GS410 Glacier



GS406 Eclipse

### NOTE

Colors as they appear on this specification sheet may be slightly different than the actual fabrics. Please request fabric samples to obtain a more accurate rendition of colors.