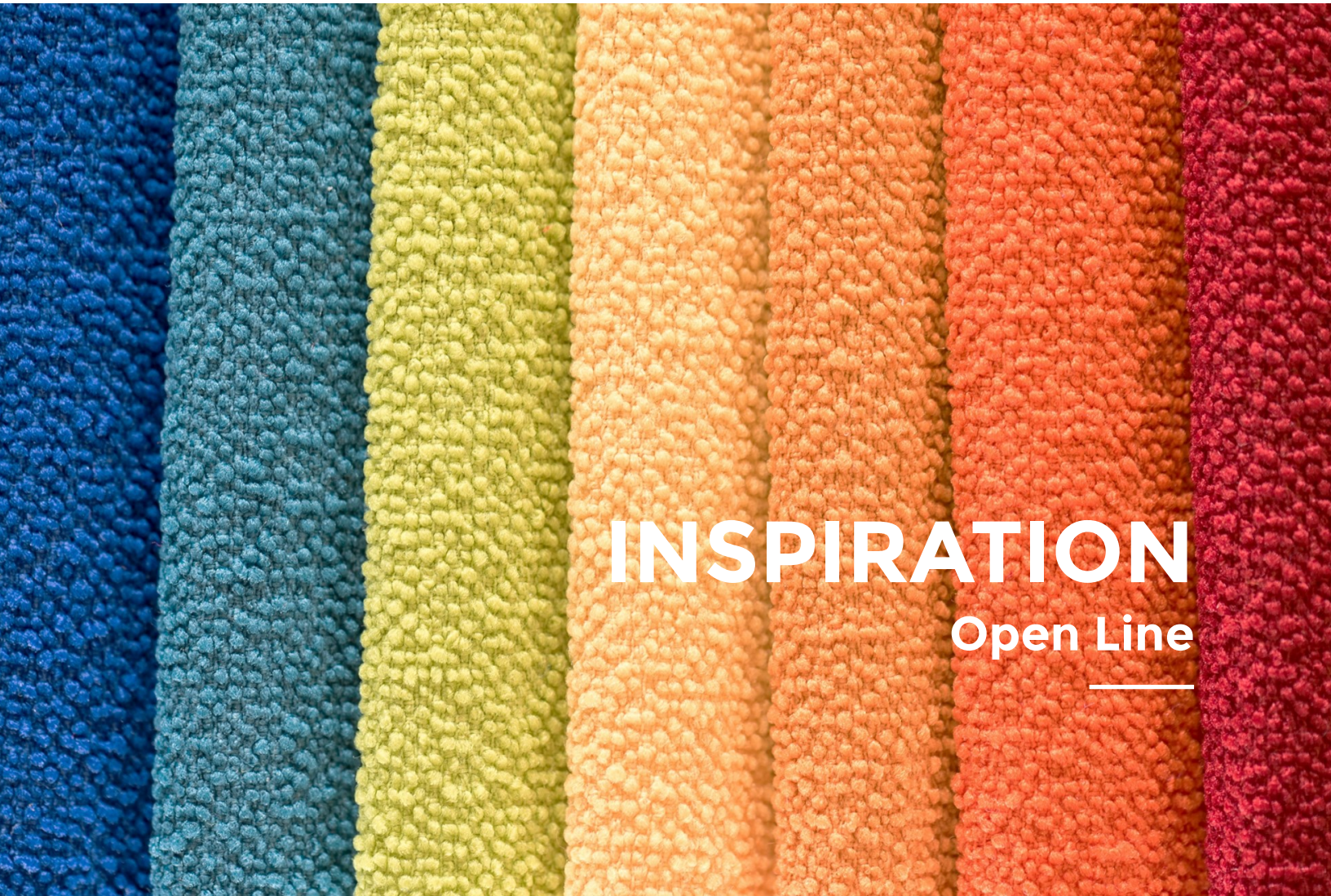


# GEO.SHEARD FABRICS



Performance with Style



# INSPIRATION

Open Line

---



# GEO. SHEARD FABRICS








Performance with Style

INSPIRATION

## SPECIFICATIONS

|               |  |
|---------------|--|
| Style         | 21878  |
| Contents      | 20% REPREVE®<br>Our Ocean™ Post Consumer<br>Recycled Polyester<br>80% REPREVE® Post Consumer<br>Recycled Polyester |
| Weight        | 22 oz./lin.yd.   |
| Width         | 54"  |
| Backing       | Nvirosoft™<br>Eco-friendly backing   |
| Finish        | GreenShield®<br>Stain Repellent  |
| Cleaning Code | WS   |

## PERFORMANCE

|  |                                  |
|--|----------------------------------|
|  Abrasion Resistance<br>ASTM D4157                            | 250,000+<br>Double Rubs          |
|  Pilling Resistance<br>ASTM D3511                             | Class 5                          |
| Seam Slippage<br>ASTM D4034  | Warp: 79 lbs<br>Fill: 133 lbs    |
| Breaking Force<br>ASTM D5034-09  | Warp: 177 lbs<br>Fill: 234 lbs   |
|  Colorfastness to Light<br>AATCC 16.3                         | L4-5<br>Min. 40 hours            |
|  Colorfastness to Crocking<br>AATCC 8                         | Class 4.5 - dry<br>Class 5 - wet |
|  State of California<br>Technical Bulletin 117:<br>June 2013 | Pass                             |

## SUSTAINABILITY

### This fabric contains post-consumer recycled polyester



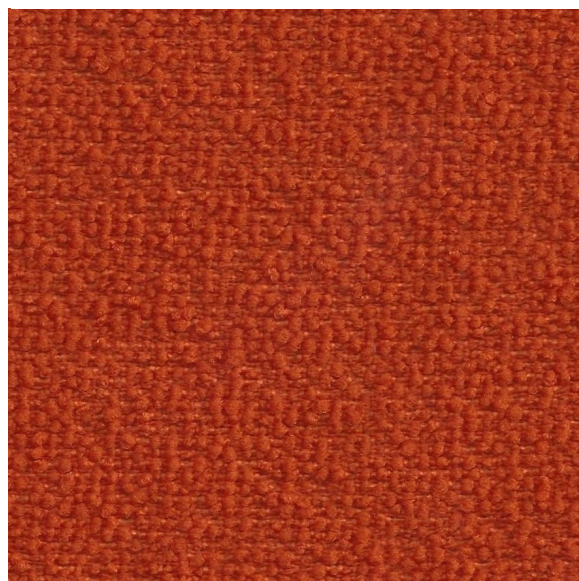
The Greenleaf logo is a trademark of Geo. Sheard Fabrics and designates fabrics containing post-consumer recycled polyester made from recycled plastic bottles which are diverted from landfills.

REPREVE® Our Ocean™ is the leading brand of recycled performance yarns and contains plastic derived from bottles collected within 50 kilometers of coastlines in countries that lack formal waste or recycling systems.

Nvirosoft™ is an environment-friendly acrylic backing which is free of all Prop 65 chemicals at the source. It combines high performance with a soft and supple finish for comfort and ease of upholstery.

GreenShield® is a stain repellent recognized for its environmental properties. It contains no PFOA and PFOS and is Prop 65 compliant. It provides excellent oil and water repellency while reducing the impact on the environment.

IN710 Lava



COLORSPEC® TEXTURES

# GEO.SHEARD FABRICS

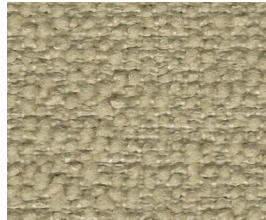


Performance with Style

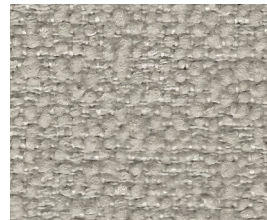
## INSPIRATION



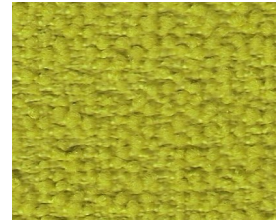
IN109 Dove



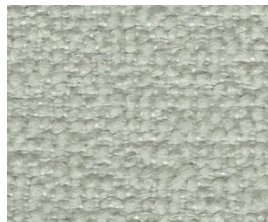
IN205 Cork



IN103 Desert



IN507 Tropic



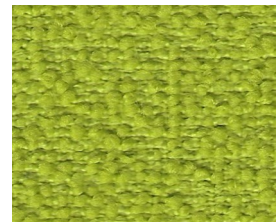
IN801 Mist



IN710 Lava



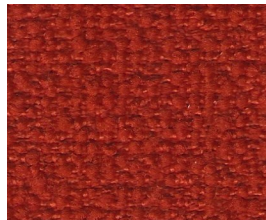
IN203 Cadmium



IN510 Dragonfly



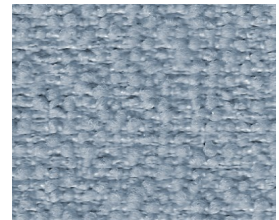
IN802 Mystic



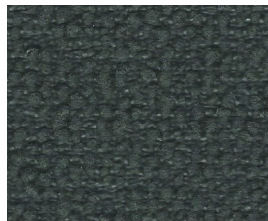
IN304 Flame



IN712 Amber



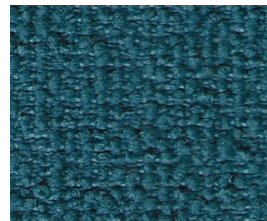
IN406 Breeze



IN811 Slate



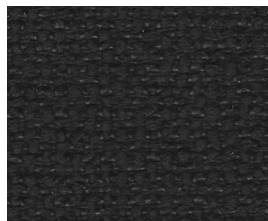
IN306 Sangria



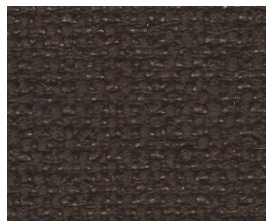
IN405 Cancun



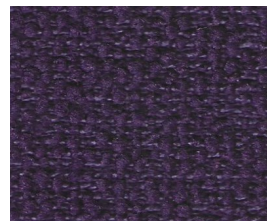
IN412 Cobalt



IN901 Ebony



IN705 Carob



IN603 Monarch

### NOTE

Colors as they appear on this specification sheet may be slightly different than the actual fabrics. Please request fabric samples to obtain a more accurate rendition of colors.